



**ALASKA DIVISION OF HOMELAND SECURITY &
EMERGENCY MANAGEMENT**



SITUATION REPORT 21-336 • DECEMBER 02, 2021

Toll-Free 1.800.478.2337

Anchorage Area 907.428.7000

SEOC 907.428.7100

<p><u>SEOC Preparedness Level</u> Level 1 – Normal Operations</p>	<p>http://ready.alaska.gov</p>	<p><u>National Terrorism Advisory System:</u> Read the updated NTAS Bulletin here</p>
<p><u>Maritime Security (MARSEC)</u> Level:1-Minimum Appropriate Security Measures</p>	<p>WHO Novel Coronavirus Pandemic (COVID-19): 2019 Novel Coronavirus</p>	<p><u>Alaska Military Installation Force Protection Level:</u> FPCON Bravo</p>

(Significant changes from previous situation reports are in red.)

Significant Issues:

None

Threat Level Changes:

None

State of Alaska Department of Health and Social Services (DHSS)

DHSS is now leading the State of Alaska COVID-19 Recovery through Department Operations, supported by SEOC and other state departments as required.

For current COVID-19 information, see:

<https://covid19.alaska.gov/>

<https://www.cdc.gov/coronavirus/2019-ncov/index.html>

NTAS BULLETIN

To read current or expired advisories, click the link below:

<https://www.dhs.gov/national-terrorism-advisory-system>

Travel Alerts and Conditions

For current driving conditions dial 511 or link to <http://511.alaska.gov/>

Barry Arm Landslide / Tsunami Risk

For the latest information on the Barry Arm Landslide and Tsunami risk, click here:

[DGGG Barry Arm Landslide and Tsunami Hazard](#)

Recent Earthquakes

The USGS recorded a M5.3 earthquake 170 miles southwest of Adak Alaska just after 5:00 P.M. yesterday. There have been no reported damages or issues as a result of the earthquake.

USGS Earthquake Information: <http://earthquake.usgs.gov/>

National Tsunami Warning Center: <http://tsunami.gov/>

Alaska Volcanoes

Great Sitkin Alert Level: **Watch** and Aviation Color Code: **Orange**

Pavlof Alert Level: **Watch** and Aviation Color Code: **Orange**

Semisopchnoi Alert Level: **Watch** and Aviation Color Code: **Orange**

For Alaska Volcano updates, go to: <https://www.avo.alaska.edu/>

Air Quality Index (AQI) Advisories

For the most up to date Air Quality Index Advisories:

<http://dec.alaska.gov/Applications/Air/airtoolsweb/Home/Index>

Spills of Oil and Hazardous Substances

The ADEC Spill Prevention and Response page is located at:

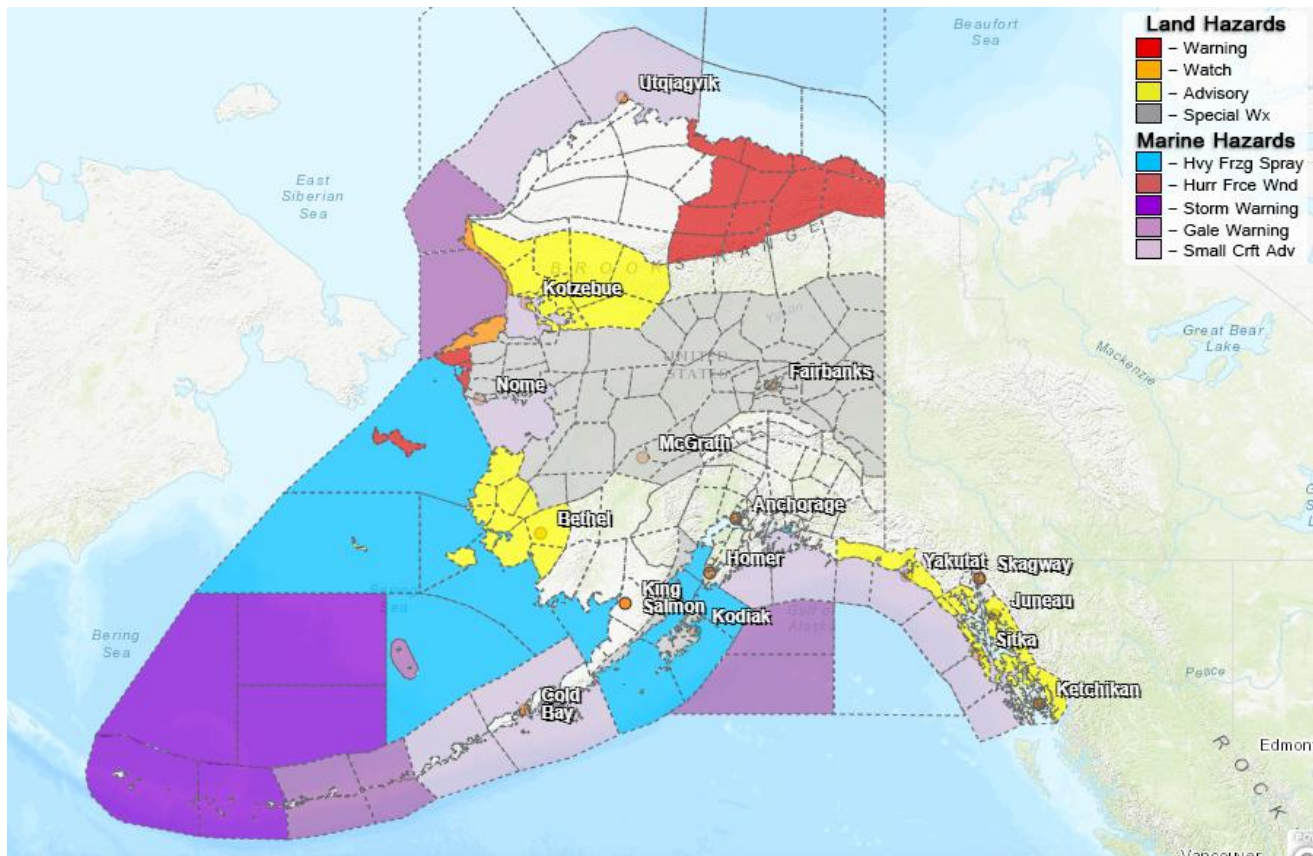
<http://dec.alaska.gov/spar/ppr/spill-information/response/>

Alaska Cyber Security Information

State Employees may sign up for cyber security notifications and alerts at

<https://oit.alaska.gov/security>

Significant Weather:



A Blizzard Warning is in effect from 6:00 P.M. today until 9:00 P.M. tomorrow for St. Lawrence Island and the Bering Strait coast. 2 to 4 inches of snow accumulation and winds gusting to 60mph are possible.

A Winter Storm Watch is in effect from this evening until Saturday afternoon for the Chukchi Sea coast for high winds and blowing snow.

Wind Chill Advisories and Warnings are in effect for the following areas:

- Beaufort Sea Coast and the northeastern Brooks Range until noon today.
- Baldwin Peninsula and the Kobuk and Noatak Valleys until 9:00 A.M. Saturday.

Winter Weather Advisories are in effect for the following areas:

- Kuskokwim Delta west of Bethel for Friday. 2 to 4 inches of snow accumulation and with winds gusting to 40mph.
- Hyder and Petersburg until 6:00 A.M. Friday. 7 to 12 inches of snow accumulation.
- Elfin Cove, Gustavus, Juneau, Pelican, Sitka and Yakutat until 3:00 P.M. today. 4 to 9 inches of snow accumulation
- Yukon Delta from 6:00 A.M. Friday until 3:00 A.M. Saturday. 2 inches of snow accumulation and winds gusting to 40mph.

Special Weather Statements remain in effect for the following areas:

- Interior Alaska will likely see low temperatures in the 30°F to 40°F below zero range through the weekend.
- Western Kodiak Island. Volcanic ash from the 1912 Novarupta eruption may become resuspended due to strong winds today into this evening.
- Southern Seward Peninsula and the western Interior. A major storm could impact the area late this weekend with high winds, heavy snowfall and water levels above the normal high tide lines in parts of Norton Sound

For more information and the most current weather, Watches / Warnings / Advisories go to:

<http://www.weather.gov/arh>

Avalanche Forecast:



There are areas near Chilkat Lake, Haines and Cordova with considerable avalanche risk. **And near Valdez and along the Richardson Highway with moderate risk.**

Check the Avalanche Forecast Center closest to your area for the most up to date information on avalanche potential. <https://alaskasnow.org> or <https://www.weather.gov/afc/avalancheweather>

The Next Situation Report: will be 03 December 2021. A significant change in the situation or the threat level will prompt an interim report.

This report is posted on the internet at <https://ready.alaska.gov/sitrep>. To register for email distribution, go to <http://list.state.ak.us/mailman/listinfo/dhsem.situation.report>. Direct questions regarding this report to the SEOC at 907-428-7100 or seoc@alaska.gov